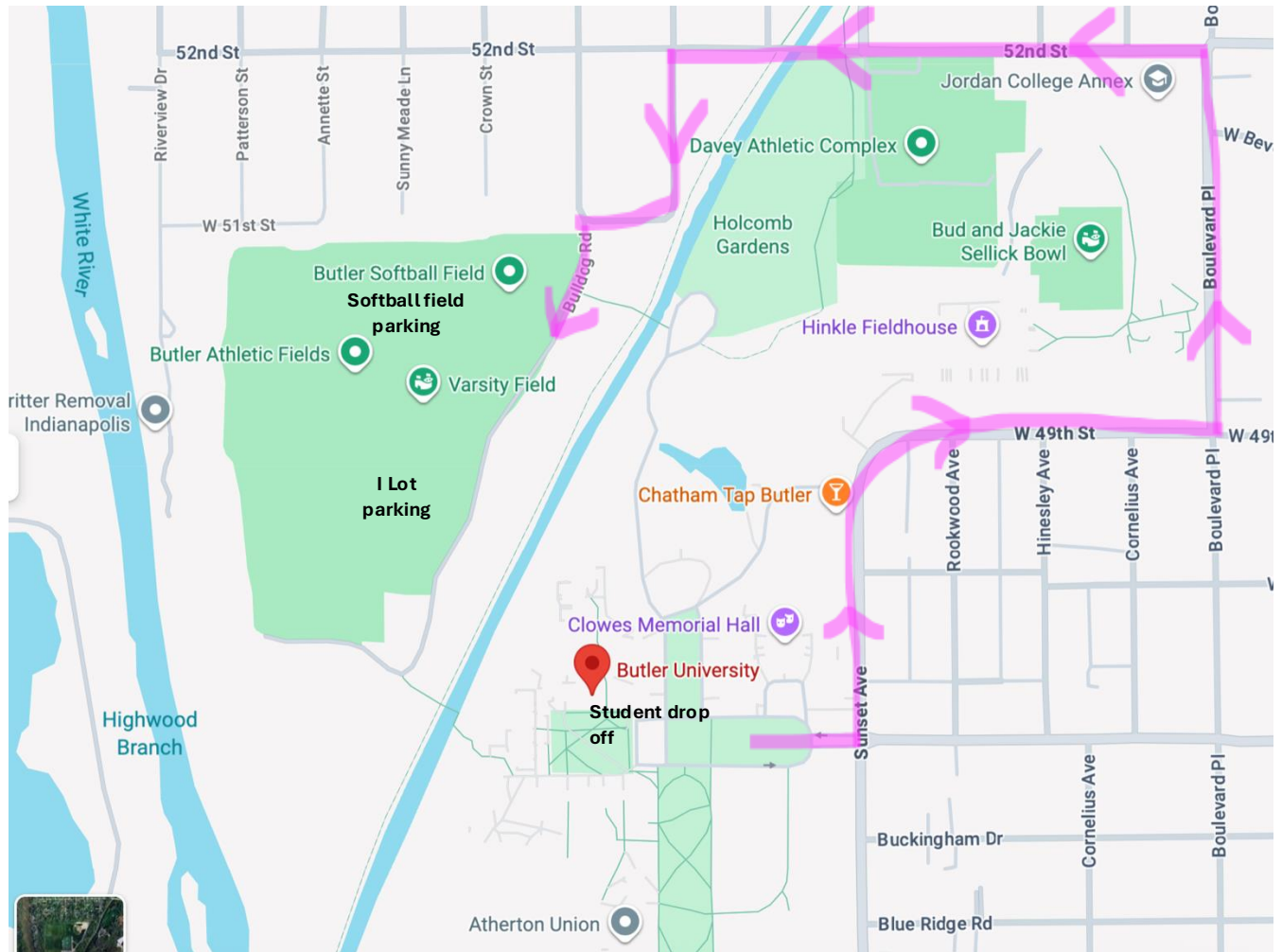


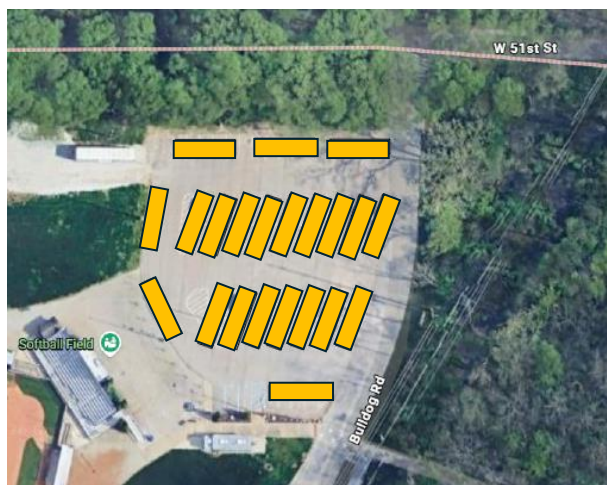
Parking Information for Science Olympiad - Large Buses

After drop off, the larger buses will need to park at the Butler softball diamond and the "I Lot." The Butler softball diamond is off of 51st street and Bulldog Road and should fit the first 22 buses. See below for a map to these locations and a diagram to maximize bus parking at the softball diamond.

Once the softball diamond is full, there is room for 8 additional buses in the "I Lot."



Left: Softball Diamond Large Bus Parking Recommendation

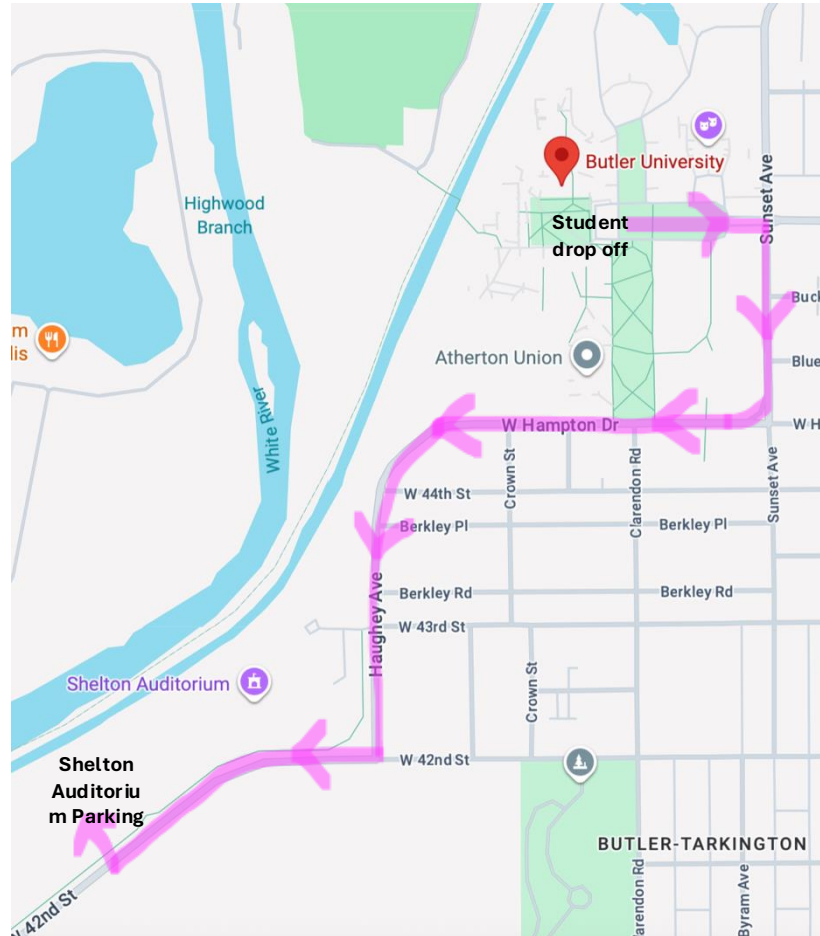


Right: I Lot Bus Parking Recommendation



Parking Information for Science Olympiad - Mini Buses

Mini buses will need to park at South Campus at the Shelton Auditorium Parking Lot. When leaving the student drop off area, drive south through campus to 42nd Street. See below for a map to this location.



The Shelton Auditorium Parking Lot is marked with a yellow star.

