

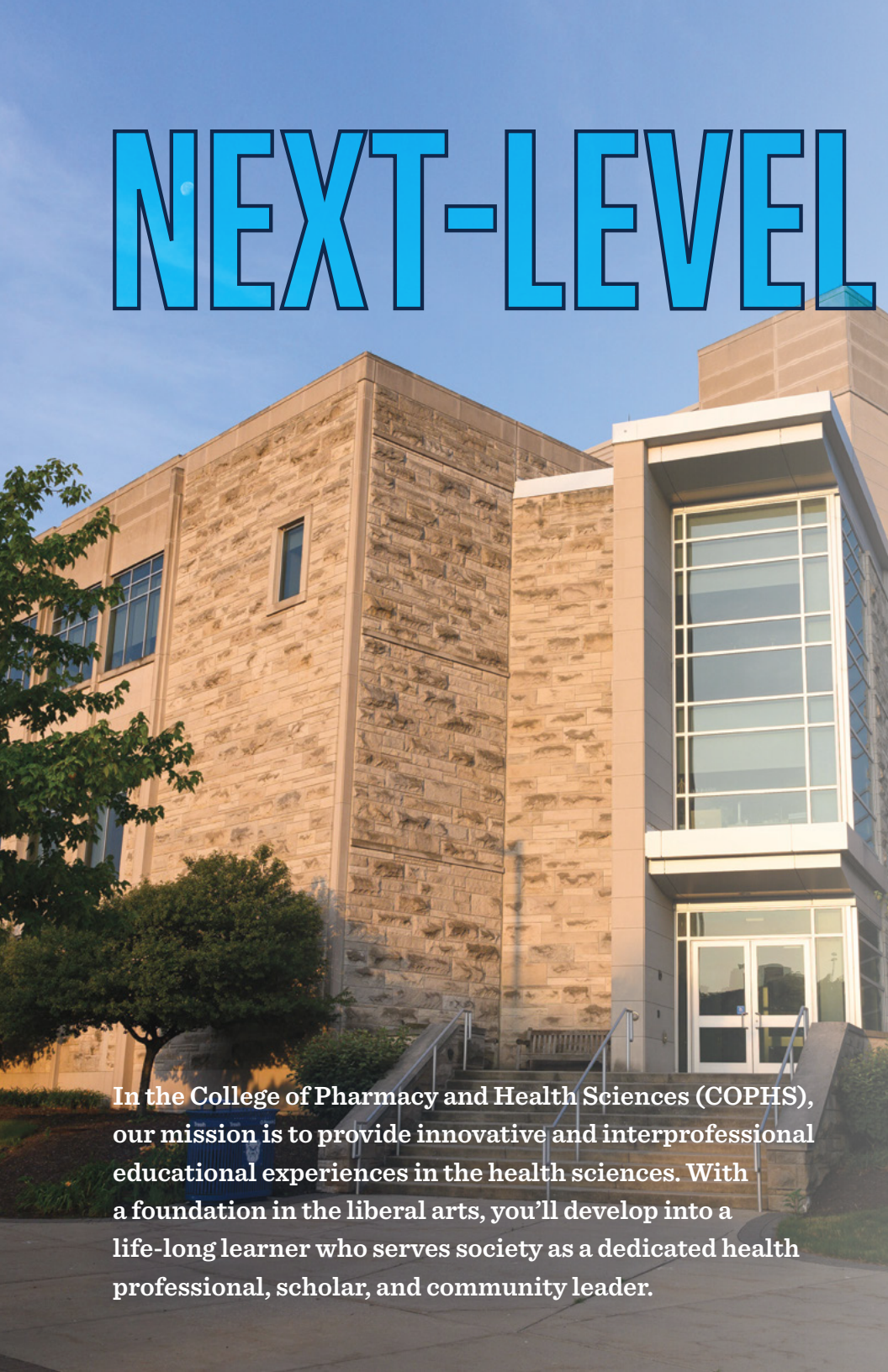


A Community of
**FUTURE
HEALTHCARE
LEADERS**

BUTLER

COLLEGE of PHARMACY
and HEALTH SCIENCES

NEXT-LEVEL



In the College of Pharmacy and Health Sciences (COPHS), our mission is to provide innovative and interprofessional educational experiences in the health sciences. With a foundation in the liberal arts, you'll develop into a life-long learner who serves society as a dedicated health professional, scholar, and community leader.

CARE:

In the Lab and in the Field.

As a student, you will receive the highest-quality professional education plus access to a wide range of co-curricular opportunities. Leadership, service, athletics, arts, and culture—it's all here to enhance your education and enrich your life.

Our location in Indianapolis—a major healthcare corridor—will provide ample opportunities for hands-on learning, both inside the classroom and out. This includes collaborative research with faculty, clinical experiences with some of the nation's largest healthcare organizations, and internship opportunities that prepare you to enter a career in healthcare.



So, whether you graduate as a pharmacist, a PA, a nurse, a healthcare administrator, a pharmaceutical scientist, or seek to advance your post-professional education, you'll be prepared to improve the quality of life of the patients—and community—you serve.



HEALTH SCIENCES

The Health Sciences major is designed to prepare you for successful entry into careers and healthcare-related graduate programs, including:

Dentistry
Medicine
PA Studies

Physical Therapy
Occupational Therapy
Optometry

If you know you want to work in healthcare, but you aren't sure which path is best for you, the Health Sciences major will expose you to the many paths within healthcare. You'll be challenged, encouraged, and given the opportunity to explore and discern many aspects of the healthcare field, preparing you for the career that most closely aligns with your skillset and passions. The Health Sciences program enrolls approximately 65–75 students in each first-year class.

Health Sciences Career Paths

Graduates of the Health Sciences program are prepared for both direct entry into the workforce or for additional post-professional education.

Featured Employers

Ascension Health
Loyola Medicine
OrthoIndy
Zotech Partners

Featured Graduate Schools

Butler University PA Program
Indiana University School of Medicine
Texas Christian University
University of Wisconsin

HEALTHCARE & BUSINESS

The Healthcare and Business program provides distinctive opportunities to students who are interested in the business of healthcare. This program combines Butler's liberal arts-based Core Curriculum with well-rounded coursework in the basic sciences, healthcare, and business. With over 60 elective options, you can tailor your education for careers or further studies in healthcare or business. Each first-year class includes 10–15 students.

Healthcare and Business Career Paths

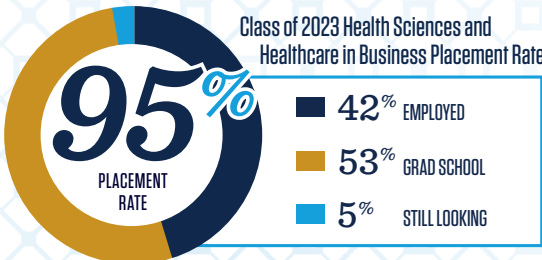
Graduates of the Healthcare and Business program are prepared for both direct entry into the workforce or for additional post-professional education.

Featured Employers

Aon
Eli Lilly and Company
Precision AQ

Featured Graduate Schools

Burnett School of Medicine at Texas Christian University
Indiana University School of Dentistry
Rush University Master's in Health Systems Management



Learn more about Health Sciences and Healthcare and Business.



NURSING

The direct entry bachelor's in Nursing program will welcome its first class in fall 2025. The program offers an innovative curriculum that merges academic knowledge with practical skills. As a nursing student, you will benefit from clinical exposure in hospital systems in your first year.

You'll work in state-of-the-art simulation labs, gaining exposure to real-world experiences within the safety net of a controlled environment. In your last semester, you'll wrap up your clinical experiences with a 1:1 preceptorship in addition to an elective course of your choosing in either cardiology, medical surgical, or perioperative studies. The Nursing program expects to enroll 48 students in its first cohort.

What does direct entry mean?

Direct entry means Butler nursing students automatically start the program in their first year, without additional coursework or applications. This competitive path offers a straightforward route to a nursing career, leveraging Butler's history of excellent healthcare preparation.



Clinicals

Beginning your first year, you will benefit from clinical experiences featuring an 8:1 student-to-faculty ratio. All clinical locations will be within a one hour drive from campus, and sites could include:

- › American Senior Communities
- › Ascension St. Vincent
- › Community Health Network
- › Eskenazi Health
- › Franciscan Health
- › Jane Pauley Community Health
- › Shalom Health Center

By the end of the program, you will have completed 495 total clinical hours in areas including adult medicine, pediatrics, obstetrics, mental health, community health, health assessment, and more.

Early Decision Admission Plan

The Nursing program offers an optional, binding Early Decision admission plan, which means if you apply and are admitted, you will enroll and attend Butler's Nursing program. If our program is your number one choice, we highly encourage you to apply by November 1 via Early Decision.



***Learn more about
Nursing.***



PHARMACY

At Butler, Pharmacy students spend the first two years in a Pre-Pharmacy program before automatically advancing to the four-year Professional Pharmacy program, contingent on satisfactory academic progress and admission process completion.

In the Professional Phase, you'll encounter a curriculum infused with data analytics and exercises using artificial intelligence. Students gain hands-on experience through industry internships throughout the year, plus Introductory Pharmacy Practice Experiences in community and hospital pharmacies during your first two summers. Later, you'll complete ten, four-week rotations in general medicine, acute care inpatient, hospital/health system, ambulatory care, and community practice.

Upon completion of the Professional Phase, you will earn your Doctor of Pharmacy degree. The Pharmacy program enrolls approximately 75–80 students in its first-year class.

Class of 2023 Pharmacy Program
Placement Rate:

100%



*Learn more about
Pharmacy.*

Pathways to the Professional Phase

Direct Pathway: Pre-Pharmacy students automatically advance to the Professional Phase, pending satisfactory academic progress and admission requirements.

Standard Pathway: This pathway is designed for Butler students majoring in fields other than Pre-Pharmacy. It requires an application and places students into a competitive, general candidate pool.

PharmD-in-5: Students with dual enrollment or AP credit in specific courses may fast-track the Doctor of Pharmacy program to graduate in five years instead of six, requiring a heavier first-year course load and summer courses. To pursue this pathway, apply to the Professional Phase in your first year.

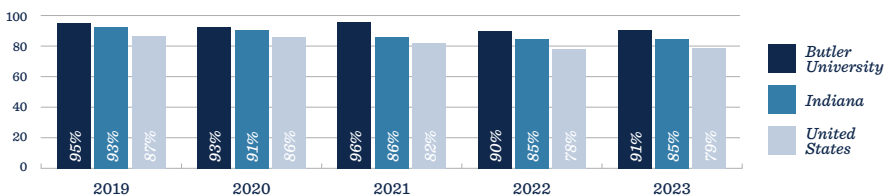
Featured Employers


- › Cleveland Clinic
- › Eskenazi Health
- › Kroger
- › Pfizer
- › Riley Hospital for Children

NAPLEX Pass Rate Data

Butler University has the highest NAPLEX pass rates in the state of Indiana and consistently outperforms the national average.

NAPLEX PASS RATE DATA





PHARMACEUTICAL SCIENCES

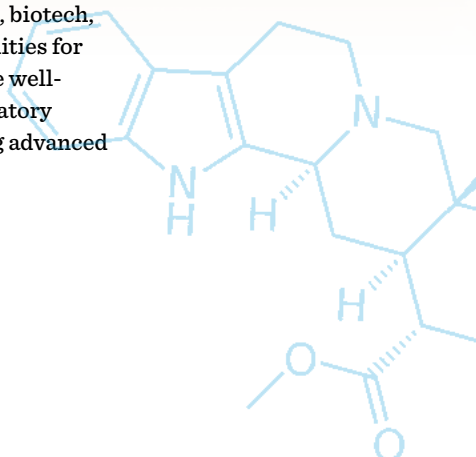
Launching in fall 2025, the bachelor's in Pharmaceutical Sciences pairs the science of drug discovery, development, and delivery with new frontiers in data science, AI, and informatics.

You'll be exposed to the latest advances in pharmaceutical sciences, AI, cheminformatics, bioinformatics, pharmaceuticals, and regulatory science through a curriculum that merges chemistry, biology, pharmacology, and informatics. You'll also have the opportunity to participate in undergraduate research in areas such as precision medicine, gene therapy, genomics, and more.

Butler's location in Indianapolis—a healthcare, biotech, and pharma hub—will provide ample opportunities for internships and experiential learning. You'll be well-prepared for jobs in pharma and biotech, regulatory agencies, marketing, clinical trials, or pursuing advanced degrees such as PhD, MD, PharmD, or PA.



*Learn more about
Pharmaceutical Sciences.*





GRADUATE and PROFESSIONAL PROGRAMS

COPHS offers high-quality, in-demand graduate and professional programs designed to help students launch or advance their careers. With programs

offered in both on-campus and online formats, our focus is to develop future healthcare leaders by advancing their skills and knowledge.

Master of PA Studies

This rigorous program offers a 24-month comprehensive primary care training program that combines coursework and clinical training, preparing graduates for national certification and state licensure. Located in Indianapolis, we provide extensive clinical opportunities with major healthcare systems locally and nationally.

Doctor of Medical Science Bridge Program

The online Bridge Program is designed exclusively for PAs who have graduated within the past 6 months from an ARC-PA accredited, entry-level program, and are interested in expanding their clinical knowledge and leadership skills on their path to the Doctor of Medical Science degree.

Doctor of Medical Science

This fully online program is tailored for working PAs seeking advanced medical knowledge, leadership skills, and business acumen. Unlike other programs, it recognizes clinical experience, omitting the requirement for a master's degree.

Doctor of Medical Science Certificates

The Doctor of Medical Science program offers two online certificates—Healthcare Practice and Administration, and PA Educator—ideal for those pursuing administrative or educator roles, especially for individuals with a doctoral degree or are not interested in obtaining one at this time.



BECOME A BULLDOG

butler.edu/apply-now

KEY DATES

- AUG. 1** Application opens
- NOV. 1** Early Action Deadline
Early Action benefits include full scholarship consideration and an admission decision by December.
- NOV. 1** Early Decision Deadline (Nursing)
The Nursing program offers an optional binding Early Decision admission plan. More information is available at butler.edu/nursing.
- DEC.** Recommended FAFSA filing period
- FEB. 1** Regular Decision Deadline
- FEB. 15** Butler's Priority FAFSA Deadline
- MID-FEB** Financial aid offer notification begins
- MAY 1** National Candidate's Reply Date
A \$500 enrollment deposit is due to the Office of Admission. This deposit is refundable through May 1.

BUTLER

COLLEGE of PHARMACY
and HEALTH SCIENCES